

RUGGEDIZED TELEMATICS



SEAL-D®

Ruggedized Telematic Connectors

NorComp's SEAL-D® connector family offers a variety of solutions to the challenges encountered in ruggedized telematics applications. These connectors offer IP67 moisture protection, high mating cycles, and excellent performance in high vibration environments.

NorComp's proprietary sealing process allows for IP67 protection while maintaining industry standard connector footprints and panel space requirements. SEAL-D® connectors are available in both signal only (up to 44 contacts) & Combo-D configurations that offer both signal and power contacts in either 20 amp or 40 amp options.



GPS Vehicle & Asset Tracking

FEATURES & BENEFITS

- Signal / Low Power in 6 standard sizes:
(Standard: 9, 15, 25 | High Density: 15, 26, 44)
- Combo-D / High Power in a variety of configurations:
(3W3, 5W1, 5W5, 7W2, 9W4, 11W1, 13W3, 13W6, 17W2, 21W1, 21W4)
- Solder Cup, Vertical Mount, & Right Angle Board Mount Options
- High Reliability Screw Machined Contacts
- 3 amp / 5 amp / 20 amp / 40 amp Power Options
- -55C to +105C Operating Temperature Range
- 100% IP Compliant Guaranteed | Made in U.S.A.



FOLLOW US:



[http:// www.norcomp.net](http://www.norcomp.net)

NORCOMP

STANDARD IP67

Cable Mount
Vertical PCB
Right Angle (0.283" Footprint)
Right Angle (0.370" Footprint)

SERIES

772-EYY-Y03RYY1
772-EYY-Y13RYY1
773-EYY-Y13RYY1
774-EYY-Y13RYY1

SIZE

9 / 15 / 25 Position
9 / 15 / 25 Position
9 / 15 / 25 Position
9 / 15 / 25 Position

HIGH DENSITY IP67

Cable Mount
Vertical PCB
Right Angle

SERIES

780-MYY-Y03LYY1
780-MYY-Y13RYY1
781-MYY-113RYY1

SIZE

15 / 26 / 44 Position
15 / 26 / 44 Position
15 / 26 / 44 Position



POWER-D IP67

Cable Mount
Vertical PCB
Right Angle

SERIES

680SYWYY03LY01
681SYWYY03L001
684SYWY103L461

SIZE

3W3 / 5W1 / 5W5 / 7W2
9W4 / 11W1 / 13W3 / 13W6
17W2 / 21W1 / 21WA4

STANDARD IP66

Cable Mount
Vertical PCB
Right Angle (0.318" Footprint)
Right Angle (0.590" Footprint)

SERIES

671-YYY-103LYY1
671-YYY-113RYY1
682-YYY-113RYY1
683-YYY-113RYY1

SIZE

9 / 15 / 25 Position
9 / 15 / 25 Position
9 / 15 / 25 Position
9 / 15 / 25 Position

HIGH DENSITY IP66

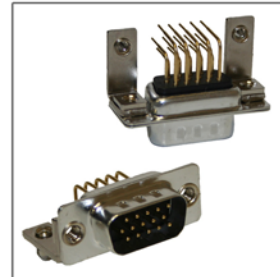
Cable Mount
Vertical PCB
Vertical PCB (Low Profile)
Right Angle

SERIES

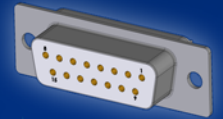
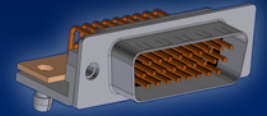
680-YYY-103LYY1
680-YYY-113RYY1
695-YYY-113LYY1
681-YYY-113RYY1

SIZE

15 / 26 / 44 Position
15 / 26 / 44 Position
15 / 26 / 44 Position
15 / 26 / 44 Position



SEAL-D®



Premium

IP Rated

Connectors

For More Information

www.norcomp.net
800-849-4450