

HEILIND

COMPONENTS FOR HARSH ENVIRONMENTS



# HEILIND

Performance. Trust. Innovation.

Harsh environments

## Heilind - Your specialist distributor

Founded in 1974, Heilind Electronics has developed into a leading specialist distributor of connectors and electromechanical components. These include connectors, relays, sensors, switches, thermal management and circuit protection products, terminal blocks, wires and cables, cable accessories, insulation and product identification. Heilind has over 40 sites in America, Asia and Europe. With offices in Hanover, Cologne and Munich as well as in Krakow (Poland) and the European central warehouse in Rosenheim, Heilind stands for closeness to customers and short distances.

Heilind has a strong sales organisation and technically skilled specialists with close ties to customers and manufacturers. This means that we can respond quickly and competently to their needs. Heilind's linecard spans a wide range of products from world-leading manufacturers, allowing it to offer the best products to its valued customers. Our globally networked warehouses with very large stock levels ensure high material availability and fast delivery. In addition, Heilind offers exclusive added values and services.

'Heilind, your partner for electromechanical components in tough environments. Switches, connectors and relays that can take a lot. Dirt, moisture, vibration and extreme temperatures. We have the right components for your needs. Just ask us.'

- Construction sites: Lorries, excavators, wheel loaders, cranes, concrete pumps
- Mining: Conveyor systems, loaders, tunnel boring machines
- Municipalities: Street cleaning, clearing and disposal vehicles
- Agriculture: Tractors, attachments, combine harvesters, forestry machinery
- Recycling: Sorting plants, shredders, presses, analysis equipment

Heilind Electronics Europe - Your reliable distributor!



## Vehicle sensors

- Path sensors, position sensors
- Pressure sensors, temperature sensors
- Exhaust sensors, level sensors
- Gearbox sensors, clutch sensors



## Protect, switch, supply

- AC DC converter / DC DC converter
- AC DC fuses
- High-performance relays

### AC DC fuses



### High-performance relays



## High-quality switches and protection caps built to last

- Robust switches, up to IP69K, illuminated, vandalism-proof for diverse applications
- Battery disconnect switches
- Toggle switches, rocker switches, push buttons, limit switches, with safety guard

### Push buttons



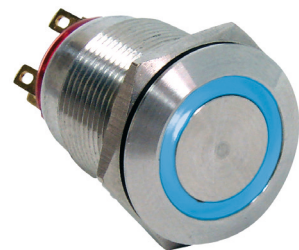
### Protective caps



### Toggle switches



### Vandalism-proof



### Rocker switches



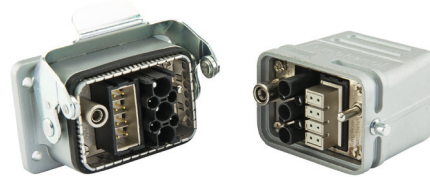
## Connectors that are unaffected by dirt and vibration

- Protection class up to IP69K
- Data connections for utility vehicles
- High-current applications

### Isobus



### Rectangular plug-in connectors



### Round plug-in connectors



### Vehicle plug-in connectors



### Electromobility



## High performance heat shrinking tubing and fittings

- Shrinking tubing for lorries, buses, construction vehicles and off-road
- Fittings
- Repair sleeves
- Feed-throughs

### Fittings



### for vehicle applications

