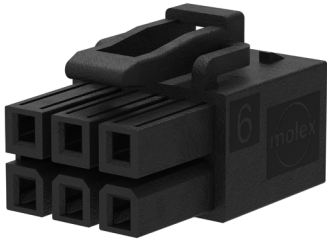


Mini-Fit Max Connector



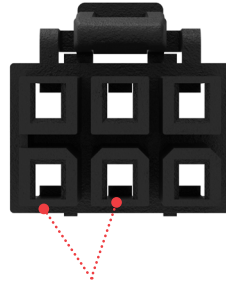
Transcending mid-power connector products, the Mini-Fit Max wire-to-board connector provides 20.5A of current in a compact package and features a robust tangless terminal design with a TPA capable receptacle

Features and Advantages



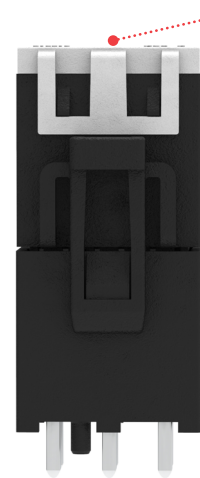
94/V-0 Glow-wire combination resin

Reduces the cost of materials and labor, and allows customers to meet the European standard for electrical requirements



Keying and polarization

Helps prevent mismatching; different from the standard Mini-Fit connector

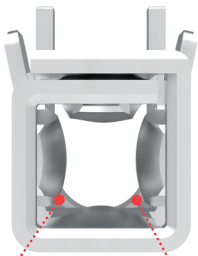


Optional TPA with TPA stop

Helps ensure that terminals are fully seated in housing to reduce terminal backout

Slim profile design

Saves PCB space



4 Independent points of contact

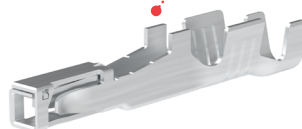
Offer redundant, secondary current paths for long-term performance and reliability

TPA stop

Helps ensure that terminals are fully seated in their housing to reduce terminal backout

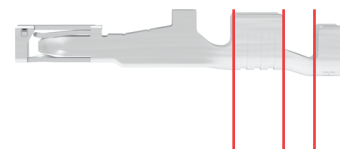
End-to-End Stackable

Delivers more power per linear inch and square millimeter than other mid-range power connectors



Tangless terminal

Provides safety for the terminals during packing and assembly insertion



Conductor Crimp
Insulation Crimp
Bellmouth

Mini-Fit Max Connector



Applications

Telecommunications/Networking

- Switches
- Servers
- Power supplies and distribution
- Network towers

Industrial

- Machinery
- Commercial equipment
- Commercial lighting
- Industrial HVAC systems

Home Appliance

- Heaters and air conditioners
- Washers and dryers

Commercial Vehicle

- Power converters Unsealed electronic control modules
- Transportation trucks



Industrial Machinery



Transportation Truck



Network Tower

Specifications

REFERENCE INFORMATION

Packaging: Reference Molex.com Spec. Part Number

UL File No.: Reference the Product Specification

CSA File No.: Reference the Product Specification

Mates With:

Series: 212514 Series: 212520

Series: 212515 Series: 212514

Series: 212516 Series: 212514

Use With: See "Mates With" above

Terminal Used: 212515

Designed In: Millimeters

RoHS: Yes

Halogen Free: Yes

Glow-Wire Capable: Yes

ELECTRICAL

Voltage (max.): 600V

Current (max.): 20.5A

Contact Resistance: 2 M Ω

Dielectric Withstanding Voltage: < 5 mA

Insulation Resistance: 1,000 M Ω minimum

MECHANICAL

Contact Retention to Housing: 40.0N

Mating Force: 6.0N

Unmating Force: 4.0N

Durability (min.): 20 cycles

PHYSICAL

Housing: UL 94V-0/Glow Wire

Pitch: 4.20mm

Contact: Tin (Sn)

Plating:

Contact Area — Tin (Sn)

Solder Tail Area — Tin (Sn)

Underplating — Nickel (Ni)

PCB Thickness: Multiple options

Operating Temperature: 40 to +105°C

www.molex.com/link/minifitmax.html

Molex is a registered trademark of Molex, LLC in the United States of America and may be registered in other countries; all other trademarks listed herein belong to their respective owners.