

Easy-On FFC/FPC One-Touch Connectors, 200485 Series

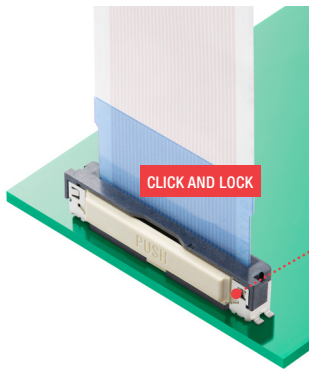
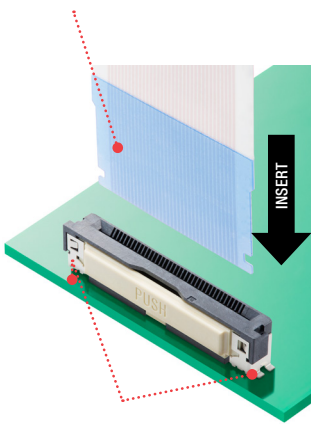
molex

Easy-On FFC/FPC One-Touch Connectors feature single-step mating with an auto lock-nail mechanism and high-retention force a for quick and reliable connection and easy operation, making these connectors ideal for many industries

Features and Advantages

One-touch insertion operation

A wide FFC/FPC mouth helps in easy insertion and auto-lock assembly line benefits the customer manufacturing line

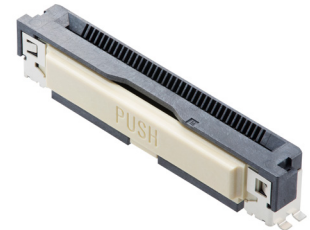


Operates at a temperature of up to 125°C

Meets a wide range of application needs



Right-Angle version



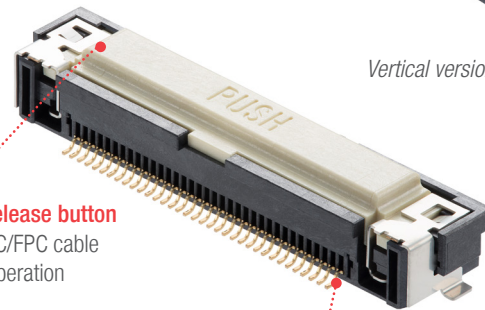
Vertical version

Visible release button

Eases FFC/FPC cable release operation

Ground Terminal (optional)

Provides superior signal integrity



Lock-nail system

Ensures FFC/FPC cable connection by high retention force

Easy-On, One-Touch Right-Angle Connector shown
(Same features applicable on vertical connector)

Selective gold plating on signal terminal

Prevents solder wicking for the SMT solder tail

Markets and Applications

Connected Home / Home Appliance

- Smart appliances
- Smart connected appliances
- Vending machines

Automotive

- Connected mobility
- Comfort and infotainment

Data/Computing

- Severs / Networking / Storage

Consumer

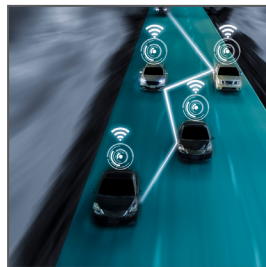
- Home entertainment
- Flat LCD / LED display panels
- Home security

Industrial

- Connectivity
- Signal

Industrial Automation

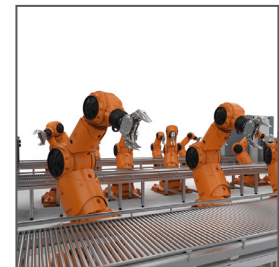
- Automotive assembly line



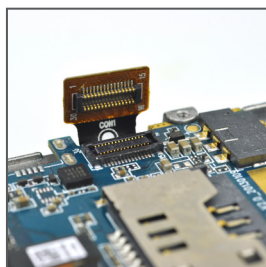
Connected Mobility



Car IoT Infotainment



Assembly Automation



PCB Servers



Smart Appliances



LED (OLED) displays

Easy-On FFC/FPC One-Touch Connectors, 200485 Series



Specifications

REFERENCE INFORMATION

Packaging: Embossed
 UL File No.: UL94V-0
 Mates With: FFC/FPC
 Designed In: Millimeters
 RoHS: Yes
 Halogen Free: Low halogen

ELECTRICAL

Voltage (max.): 50V
 Current (max.): 0.5A
 Contact Resistance (max.): 40 milliohms
 Dielectric Withstanding Voltage: 125V AC
 Insulation Resistance (min.): 50 Megohms

MECHANICAL

Durability (min.): 20 cycles

PHYSICAL

Housing: LCP
 Button: LCP
 Contact: Copper Alloy
 Plating:
 Signal Contact Area — Gold (Au)
 Signal Solder Tail Area — Gold (Au)
 Nail Solder Tail Area — Tin (Sn)
 Ground Contact Area — Tin (Sn) <option>
 Ground Solder Tail Area — Tin (Sn) <option>
 Underplating: Nickel (Ni)
 FFC/FPC Thickness:
 0.30 +/-0.05mm (standard without ground)
 0.33 +/-0.03mm (option with ground)
 Operating Temperature:
 -40 to +105°C / -40 to +125°C

Ordering Information

Part Number	Pitch (mm)	Height (mm)	Current (max.)	Voltage (max.)	Orientation	Contact Position	Ground	Circuit size	Operating Temperature	Plating	Durability
200485-00**	0.50	4.46	0.5A	50V	Right-Angle	Bottom	No	10 to 51	-40 to +125°C	Gold	20 cycles
200485-01**		5.60			Vertical	-					
200485-02**		4.46			Right-Angle	Bottom	Yes				
200485-03**		5.60			Vertical	-					
200485-04**		4.46			Right-Angle	Bottom	No		-40 to +105°C		
200485-05**		5.60			Vertical	-					
200485-06**		4.46			Right-Angle	Bottom	Yes				
200485-07**		5.60			Vertical	-					

* Replace ** with circuit size

www.molex.com/link/easyon.html

Molex is a registered trademark of Molex, LLC in the United States of America and may be registered in other countries; all other trademarks listed herein belong to their respective owners.