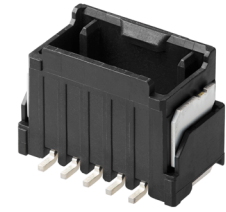


# Micro-One Wire-to-Board Connector with Integrated ISL

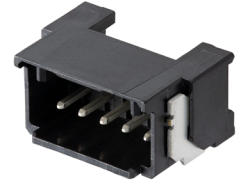
**molex**

Compact Micro-One Wire-to-Board Connector with integrated ISL and potting capability, providing secure electrical contact, superior mating retention and protection against harsh environment conditions

## Features and Advantages



Micro-One Connector, Vertical Version



Micro-One Connector, Right-Angle Version



Micro-One Receptacle housing with integrated ISL

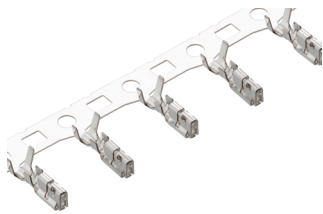


Receptacle Housing

**Independent secondary lock (ISL)**  
Detects incomplete terminal insertion

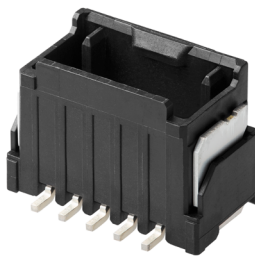
**2.00mm pitch low-profile design**  
Reduces weight and saves space

**UL certified connectors**  
Ensures reliability



Crimp Terminal

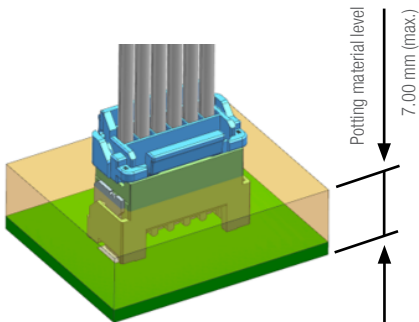
56134-9001 for AWG22-24  
56134-9002 for AWG26-28



Vertical Header

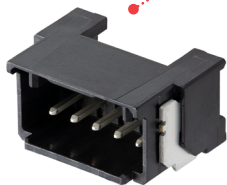


**2- to 8- circuit vertical and right-angle header assembly**  
Offers design flexibility

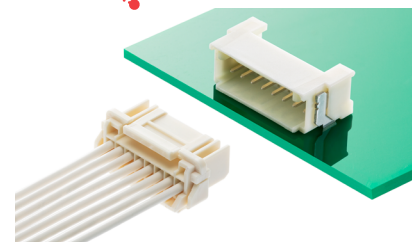


Vertical Header with Potting Capability (217063 Series)

**Potting liquid (up to 7.00 mm height)**  
Prevents ingress of dust and moisture



Right-Angle Header



Right-Angle Header

# Micro-One Wire-to-Board Connector with Integrated ISL

**molex**

## Market and Applications

### Consumer

- Refrigerators
- Air conditioners
- Hot water gas heaters

### Industrial

- Power tools
- Test equipment
- Robots
- Factory automation
- Drones
- Vending machines



Vending Machine



White Goods



Drones

## Specifications\*

### REFERENCE INFORMATION

- Packaging:
  - Header – Embossed
  - Receptacle Housing – Bag
  - Terminal - Reel
- UL Certified: Yes
- Designed In: Millimeters
- RoHS: Yes
- Glow Wire: Yes (217063, 217064, 205979)

### ELECTRICAL

- Voltage (max.): 250V
- Current (max.): 4.0A (2 circuit, 22 AWG)

### MECHANICAL

- Durability (max.): 30 cycles

### PHYSICAL

- Housing Color: Natural or Black
- Contact: Copper Alloy
- Plating:
  - Terminal Pin — Tin-Bismuth over Nickel
  - Crimp Terminal – Tin
- Wire Size: 22 to 28 AWG
- Operating Temperature: -40 to +105°C

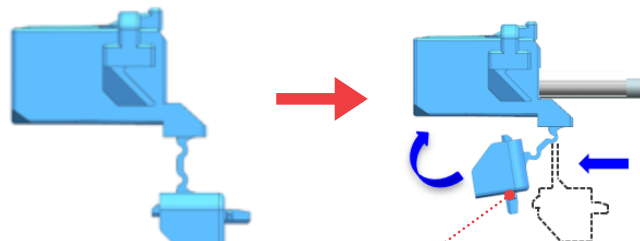
\*Refer to product specifications (2059790000-PS) for other electrical specifications

## RECEPTACLE ISL FUNCTION

As shipped

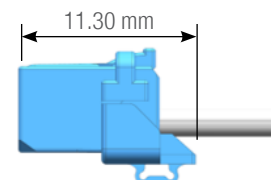


After terminal insertion



Mating by deforming the ISL part

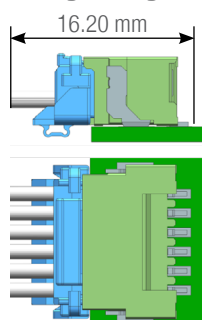
After ISL closed



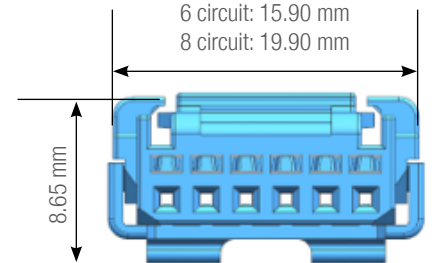
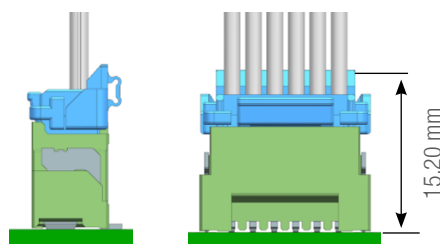
- 2 circuit: 7.90 mm
- 6 circuit: 15.90 mm
- 8 circuit: 19.90 mm

## MATED VIEW

Right Angle



Vertical



# Micro-One Wire-to-Board Connector with Integrated ISL



## Current Derating Reference Information

AWG#	Amps (A)		
	2-Circuit	4-Circuit	8-Circuit
22	4.0	3.5	3.0
24			
26	3.5	3.0	2.5
28	3.0	2.5	2.0

## Ordering Information

Series No.	Description	Potting Capability	Glow Wire	Circuits / Wire size (AWG)	Rows	Color
<a href="#">217063-00XY</a>	Vertical header	Yes	Yes	2, 3, 4, 5, 6, 7, 8	Single	Black
<a href="#">217064-00X1</a>	Right-angle header	No	Yes			
<a href="#">205971-00XY</a>	Vertical header	No	No			
<a href="#">205972-00X1</a>	Right-angle header	No	No			
<a href="#">205979-20X1</a>	Receptacle housing	No	Yes			
<a href="#">56134-9001</a>	Crimp terminal	-	-	22 to 24	-	-
<a href="#">56134-9002</a>		-	-	26 to 28	-	-

X = Circuit  
 Y=1; With cover tape  
 Y=3; Without cover tape  
 Y=5; Without cover tape  
 Y=7; With cover tape

[www.molex.com/link/micro-one.html](http://www.molex.com/link/micro-one.html)

Molex is a registered trademark of Molex, LLC in the United States of America and may be registered in other countries; all other trademarks listed herein belong to their respective owners.