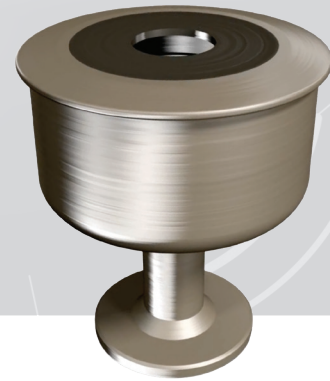




# PEM® GHOST™ FASTENING TECHNOLOGY

GHOST™ Fastening Technology is ideal for achieving tight security and sleek aesthetics. This new PEM® capability produces a **fully concealed fastener with zero visible evidence of disassembly once engaged** - and is completely customizable for many applications.



## GHOST™ Fastening Technology At-a-Glance

- Fully concealed fastener with magnetic release tool
- Tool-less assembly, re-assembly
- Near-instant release mechanism for disassembly
- Ultra-smooth design enables sleek aesthetics
- Fully captivated hardware
- Tamper-resistant for security
- Enables modular design
- Fully customizable for many applications
- Can replace most small external screw/nut assemblies

## How the Technology Works

PEM® GHOST™ Fastening Technology utilizes a fully concealed, pinch-lock mechanism to create a secure lock with zero visible evidence of disassembly once engaged.

Using a magnetic release tool on the concealed fastener actuates the internal components, unlocking the pinch-lock grip and instantly releasing the pin from the fastener.



## Consider the Possibilities of PEM® GHOST™ Technology

From automotive interiors to access control systems, PEM® GHOST™ Fastening Technology is adaptable to many applications. Use it to easily assemble customized products, to enable flexible design, and more.



Telecom



Appliances



Servers



Automotive Electronics



Security



Automotive Trim



Access Hardware



Fashion



For more information, watch our [video](#) or contact your PEM® Representative.

## GLOBAL CONTACT INFORMATION

**NORTH AMERICA**  
 Danboro, Pennsylvania USA  
 info@pemnet.com  
 +1-215-766-8853  
 800-237-4736 (USA)

**EUROPE**  
 Galway, Ireland  
 europe@pemnet.com  
 +353-91-751714

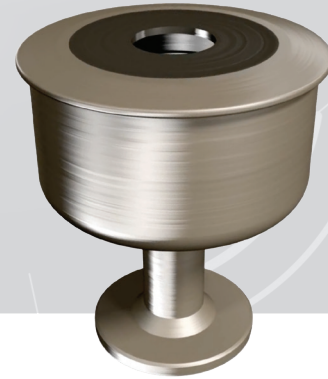
**ASIA/PACIFIC**  
 Singapore  
 singapore@pemnet.com  
 +65-6-745-0660

**SHANGHAI, CHINA**  
 china@pemnet.com  
 +86-21-5868-3688



# PEM® GHOST™ FASTENING TECHNOLOGY

GHOST™ Fastening Technology is ideal for achieving tight security and sleek aesthetics. This new PEM® capability produces a **fully concealed fastener with zero visible evidence of disassembly once engaged** - and is completely customizable for most any application.



## GHOST™ Fastening Technology At-a-Glance

- Fully concealed fastener with magnetic release tool
- Tool-less assembly, re-assembly
- Near-instant release mechanism for disassembly
- Ultra-smooth design enables sleek aesthetics
- Fully captivated hardware
- Tamper-resistant for strong security
- Enables modular design
- Fully customizable for many applications
- Can replace most small external screw/nut assemblies

## How the Technology Works

PEM® GHOST™ Fastening Technology utilizes a fully concealed, pinch-lock mechanism to create a secure lock with zero visible evidence of disassembly once engaged.

Using a magnetic release tool on the concealed fastener actuates the internal components, unlocking the pinch-lock grip and instantly releasing the pin from the fastener.



For more information, watch our [video](#) or contact your PEM® Representative.

## Consider the Possibilities of PEM® GHOST™ Technology

From automotive interiors to access control systems, PEM® GHOST™ Fastening Technology is adaptable to many unique applications. Use it to easily assemble customized products, to enable flexible design, and more.



Telecom



Appliances



Servers



Automotive Electronics



Security



Automotive Trim



Consumer Products



Fashion



Access Hardware

## GLOBAL CONTACT INFORMATION

### NORTH AMERICA

Danboro, Pennsylvania USA  
 info@pemnet.com  
 +1-215-766-8853  
 800-237-4736 (USA)

### EUROPE

Galway, Ireland  
 europe@pemnet.com  
 +353-91-751714

### ASIA/PACIFIC

Singapore  
 singapore@pemnet.com  
 +65-6-745-0660

### SHANGHAI, CHINA

china@pemnet.com  
 +86-21-5868-3688