



**Three-Pole High Performance**

Common trip mechanism trips all three phases, regardless of which phase is overloaded.

**Low-Current Protection**

Protects circuits in ratings from 1 to 15 amperes.

**Ambient-Compensated**

Effects of temperature on trip times are minimal.

**Fast Trip**

Operates on a hot-wire principle, much faster than bimetal breakers.

**Low Resistance**

Contacts are made from a silver alloy that maintains low resistance throughout the life of the breaker.

**Load Protection**

The fast tripping circuit breaker is ideal for protecting sensitive loads such as avionics and fuel pumps where rapid detection and fault clearing are desired.

**Performance Rated Circuit Breaker**

The 1526 Series is the only hot wire, fast-trip, three-pole circuit breaker in ratings from 1 -15 amperes. A single actuator controls all three poles, so that the breaker can be easily operated manually. There is only one overload latch; thus an overload on one pole will open all three poles simultaneously, regardless of which pole is overloaded. Long contact life is assured through the use of a low-resistance silver alloy.

**PERFORMANCE DATA**

<b>Interrupting Capacity</b>	300A at 120V, 400Hz., AC, three-phase
<b>Endurance</b>	4,000 cycles at 100% load
<b>Overload Cycling</b>	100 cycles minimum at 200% load
<b>Dielectric Strength</b>	1,500V, minimum
<b>Insulation Resistance</b>	Not less than 100 megohms at 500V, DC
<b>Voltage Drop</b>	Varies with rating (see "Ordering Information")
<b>Vibration</b>	Exceeds MIL-STD-202, Method 204, Condition A
<b>Shock</b>	Exceeds 30G's, 11 Millisec (half-sine pulse) MIL-STD-202, Method 213 Test J
<b>Acceleration</b>	Exceeds 10G's
<b>Weight</b>	154 grams (.340 lbs.)

**OVERLOAD CALIBRATION DATA**

Specification Table	@ 25°C		@ +71°C		@ -65°C		Test Time Parameters		
	1- 7.5A		10 - 15A						
	MIN	MAX	MIN	MAX	MIN	MAX			
Must Hold	115	—	115	—	110	—	110	—	% For 1 Hour
Must Trip	—	138	—	138	—	138	—	138	% Within 1 Hour
200% Overload	.35	4.0	3.0	10.0	—	—	—	—	Seconds
400% Overload	.10	0.7	0.6	1.4	—	—	—	—	Seconds
600% Overload	.04	0.3	0.3	0.8	—	—	—	—	Seconds

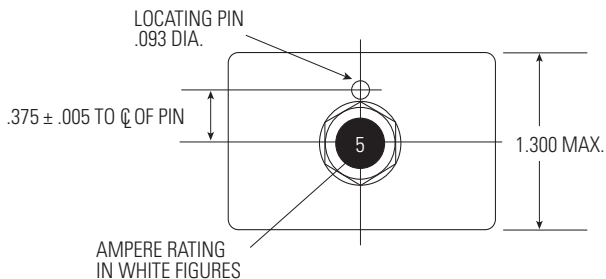
Trip curve available.

**ORDERING INFORMATION**

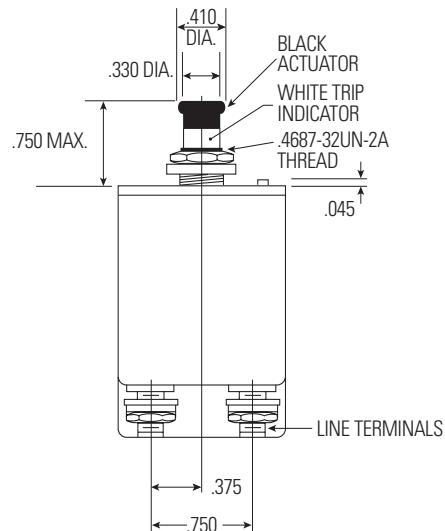
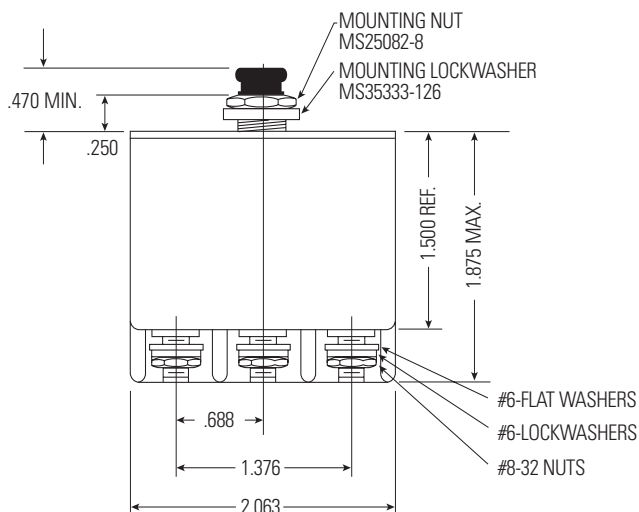
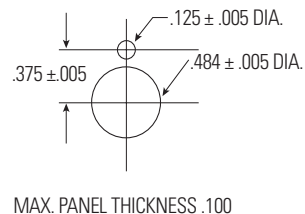
Ampere Rating	Voltage Drop Max.*	Part Number
1	1.20	1526-005-1
1 1/2	1.20	1526-005-105
2	0.95	1526-005-2
2 1/2	0.85	1526-005-205
3	0.85	1526-005-3
3 1/2	0.75	1526-005-305
4	0.72	1526-005-4
5	0.65	1526-005-5
7 1/2	0.60	1526-005-705
10	0.55	1526-005-10
15	0.50	1526-005-15

\* At rated nominal current.  
For other amperage ratings and configurations, consult the Business Unit.

**DIMENSIONS**



RECOMMENDED MOUNTING



**TRIP CURVE**

